

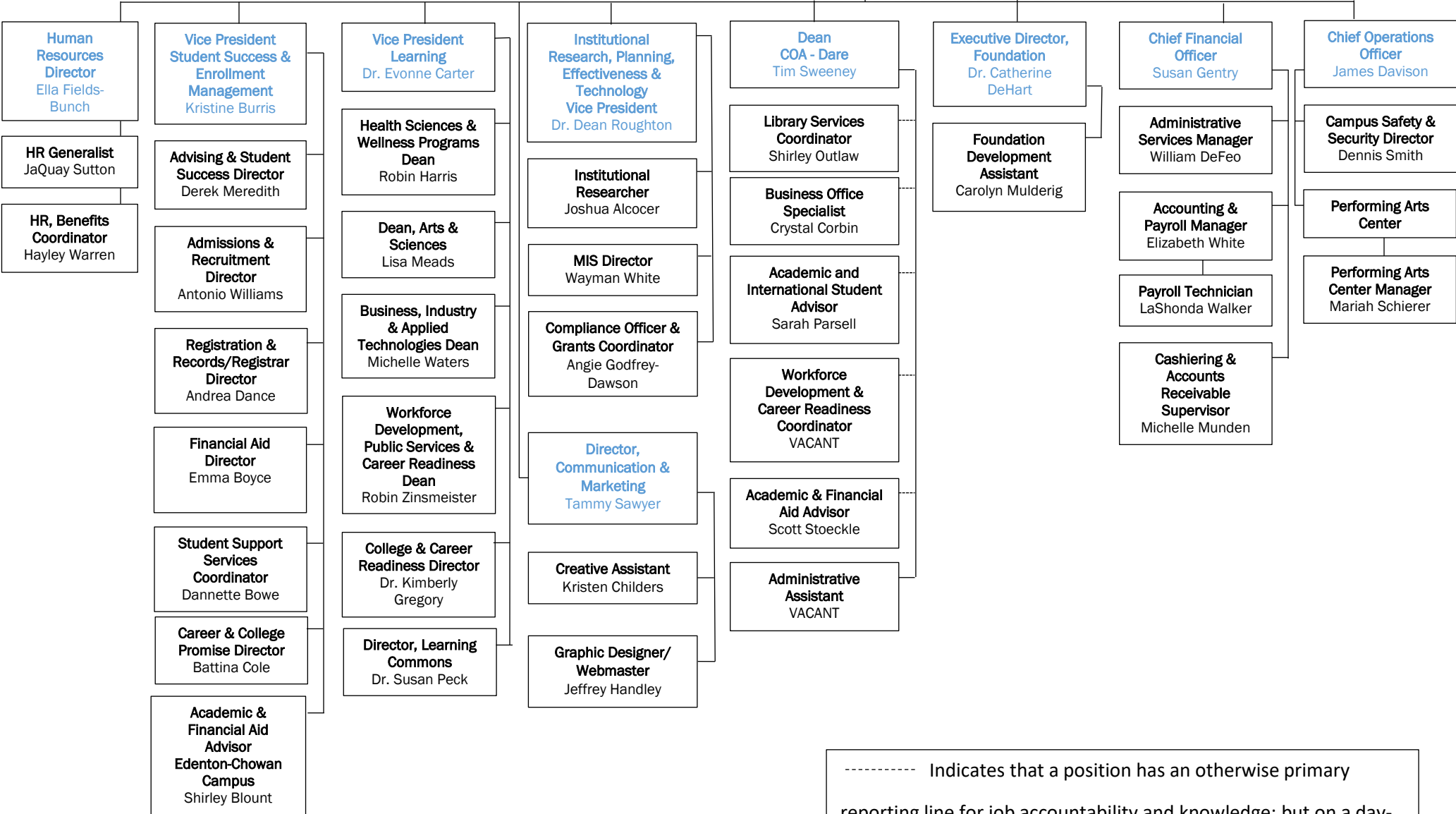


**2022-2023
Organizational Chart**

Board of Trustees

**PRESIDENT
Dr. Jack Bagwell**

**Executive Assistant
Valerie Mueller**



----- Indicates that a position has an otherwise primary reporting line for job accountability and knowledge; but on a day-to-day operational basis receives direction, supervision and support from an on-campus dean.